

# VAN DE STADT 19

DESIGN No 6

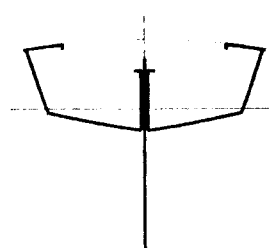
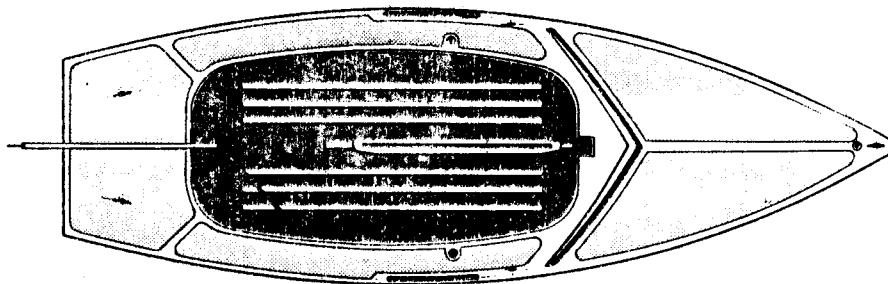
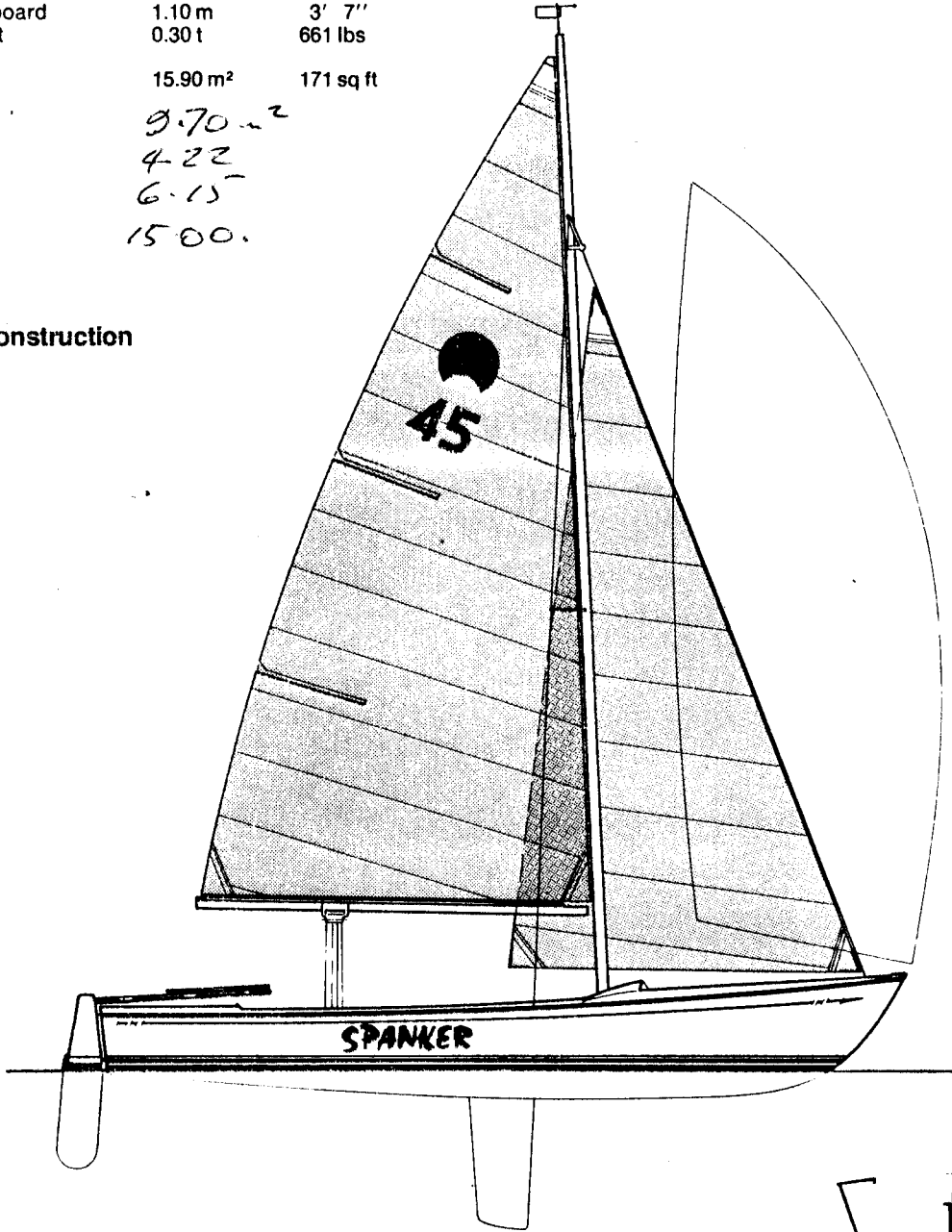
Length over all	5.75 m	18' 10"
Length waterline	5.10 m	16' 9"
Beam	1.90 m	6' 3"
Draft	0.18 m	7"
Draft center board	1.10 m	3' 7"
Displacement	0.30 t	661 lbs

Sailarea 15.90 m<sup>2</sup> 171 sq ft

MAIN. 9.70 m<sup>2</sup>  
 J/B. 4.22  
 GENOA. 6.15  
 SPINNAKER. 15.00.

**plans for:**

**hard-chine  
plywood construction**



FEELING DUTCH - A.I.A.  
 MAIN: D.I.I. { MEASURED (ACTUAL TOTAL 7.5m)}  
 GENOA: S.I.E.